

# Regional Transit Discussion

Summit and Wasatch Count(ies) Councils

September 2, 2020

## Agenda

- I. County updates
- II. Funding sources
- III. Possible next steps
- IV. Discussion &  
Questions

# Summit County

## Update

- Planning
- Service updates
- Moving forward



*Kimball Junction Circulator ridership*

September 2, 2020

# Wasatch County Transit Study Executive Summary

## BACKGROUND

Initiated by Wasatch County, Heber City, Midway, & Park City  
 Contacted Mountainland Association of Governments (MAG)  
 MAG obtained funding from UDOT, Park City, Heber City, Midway, & Wasatch County  
 Competitive consultant selection: LSC Transportation Consultants with Fehr & Peers



### LOCAL SERVICE

- » Combination of route-deviation & demand-response service
- » Year-round
- » Daily: 6:00 a.m. to 7:00 p.m. (Extended winter hours to 11:00 pm)
- » Two small buses
- » \$910,000 annually
- » Estimated annual ridership: 75,000 passengers

### PARK CITY COMMUTER

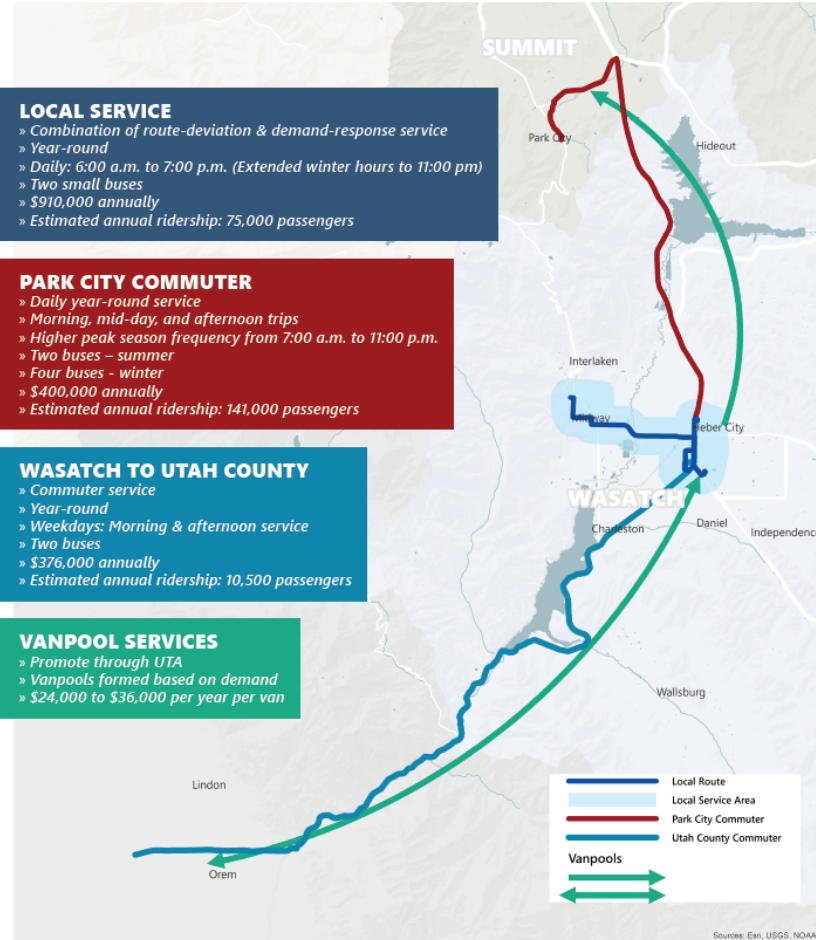
- » Daily year-round service
- » Morning, mid-day, and afternoon trips
- » Higher peak season frequency from 7:00 a.m. to 11:00 p.m.
- » Two buses - summer
- » Four buses - winter
- » \$400,000 annually
- » Estimated annual ridership: 141,000 passengers

### WASATCH TO UTAH COUNTY

- » Commuter service
- » Year-round
- » Weekdays: Morning & afternoon service
- » Two buses
- » \$376,000 annually
- » Estimated annual ridership: 10,500 passengers

### VANPOOL SERVICES

- » Promote through UTA
- » Vanpools formed based on demand
- » \$24,000 to \$36,000 per year per van



Sources: Esri, USGS, NOAA

Learn more at [www.connectingwasatch.info](http://www.connectingwasatch.info)

## STUDY PROCESS



## ESTIMATED COSTS & FUNDING

- » Approximately **\$2 million** annual Operating Cost for Full Implementation
- » Capital Cost for Full Implementation is approximately **\$6.5 million total** spread over multiple years

### POTENTIAL FUNDING SOURCES:

Table X-1 Summary of Access to Funding Sources

	CITY	COUNTY	JPA	DISTRICT
Federal Transit Formula Funds	✓	✓	✓	✓
Federal Transit Discretionary Funds	✓	✓	✓	✓
Sales Tax	✓	✓	✓	✓
Property Tax	✓	✓	✓	✓
Fares	✓	✓	✓	✓

» FTA through UDOT (Capital & Operating)  
 » Wasatch County Transportation Sales Tax

25% of a penny from sales tax would generate about **\$2.4 million/year**

### COMPARATIVE COSTS

Wasatch County Transit Service total cost per transit passenger: **\$2 to \$41** depending on service.

That's an average of about **\$7** per transit passenger

For comparison:

The average cost per transit passenger in Utah is about **\$12**.

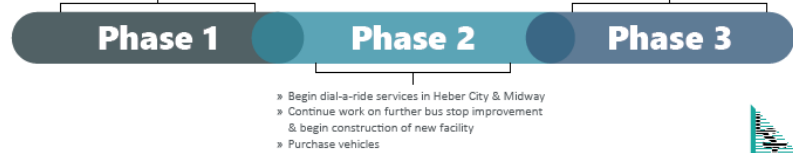
The average cost per rural vehicle trip in Utah is about **\$9**.

The total potential revenue from the Wasatch County Transportation Sales Tax would be **\$11 million annually**

## IMPLEMENTATION OPTIONS

- » **PILOT PROGRAM:** Wasatch County – Park City service. Use existing transportation provider. Partnership among local governments
- » **PHASE IMPLEMENTATION:** Phased over multiple years. Could build on pilot program
- » **FULL IMPLEMENTATION:**

- » Decide whether to implement
- » Determine initial governance structure
- » Hire transit coordinator
- » Submit applications for grant funding
- » Identify local funding sources
- » Start development of bus stop improvements & new facility
- » Begin vanpool operations for both Summit & Utah County Corridors
- » Transit facility in operation
- » Begin Park City Commuter Service & Park City Skier Service
- » Begin both Utah County Commuter services with Heber to/from Utah Co.
- » Additional Winter Seasonal Dial-a-Ride service
- » Begin new route deviation service in Heber City & Midway
- » Additional Winter Seasonal Route Deviation Service



# Wasatch Co. Update

# Transit Funding

State-enabled  
local funding

Utah Dedicated Transit and Transportation Funding							
	First Quarter	Second Quarter	Third Quarter	Fourth Quarter			Fifth Quarter
<b>Code</b>	59-12-2213*	59-12-2214*	59-12-2217*	59-12-2219			59-12-2220
<b>Name</b>	Municipal Mass Transit	Additional Mass Transit Tax	County Option Trans	Addl Transit District	Addl Transit Local	Addl Transit County	County Public Transit
<b>Tax Commission Code/Entity</b>	MM (county, city, or town)	MA (county, city, or town)	CT (county)	A1 (transit districts or political subdv. w/ transit)	A2 (cities, towns, unincorporated county areas)	A3 (countywide)	CP (county)
				<i>Imposed by County and redistributed as above</i>			
<b>Eligible use</b>	Transit	Transit	Road and Transit	Transit	Road and Transit	Road and Transit	Transit
<b>Amount (%)</b>	0.3	0.25	0.25	0.1	0.1	0.05	0.2
<b>Adopted by</b>	Ballot	Ballot	Ordinance (before June 2022)	Ordinance (before June 2022)			Ordinance (before June 2022)

\*OR 59-22-2215 imposed by a city or town (only)

\*OR 59-22-2216 imposed by a county (only)

\*OR 59-22-2218 imposed by a county, city or town

Federal funding

- Operating
- Capital
- Discretionary/Specialized
- Other (Medicaid, VA)

# Joint Planning Intent

## Potential Next Steps

- Partnership?
- Enter into *Joint Memorandum of Understanding (MOU)/Intent* between Summit and Wasatch counties
- Form working group (Council reps/staff/consultant/UDOT/other partners) for monthly meetings
- Procure transit expertise under Request for Proposal (RFP)
  - Governance/Organization Options
  - Funding Options
  - Planning, Implementation & Scalability
  - Concurrent timelines



# Discussion and Questions

## Staff Contacts

**Dustin Grabau**  
**Assistant County Manager**  
**DGrabau@wasatch.utah.gov**  
**435-657-3310**

**Caroline Rodriguez**  
**Regional Transportation**  
**Planning Director**  
**crodriguez@summitcounty.org**  
**617-817-7769**

September 2, 2020