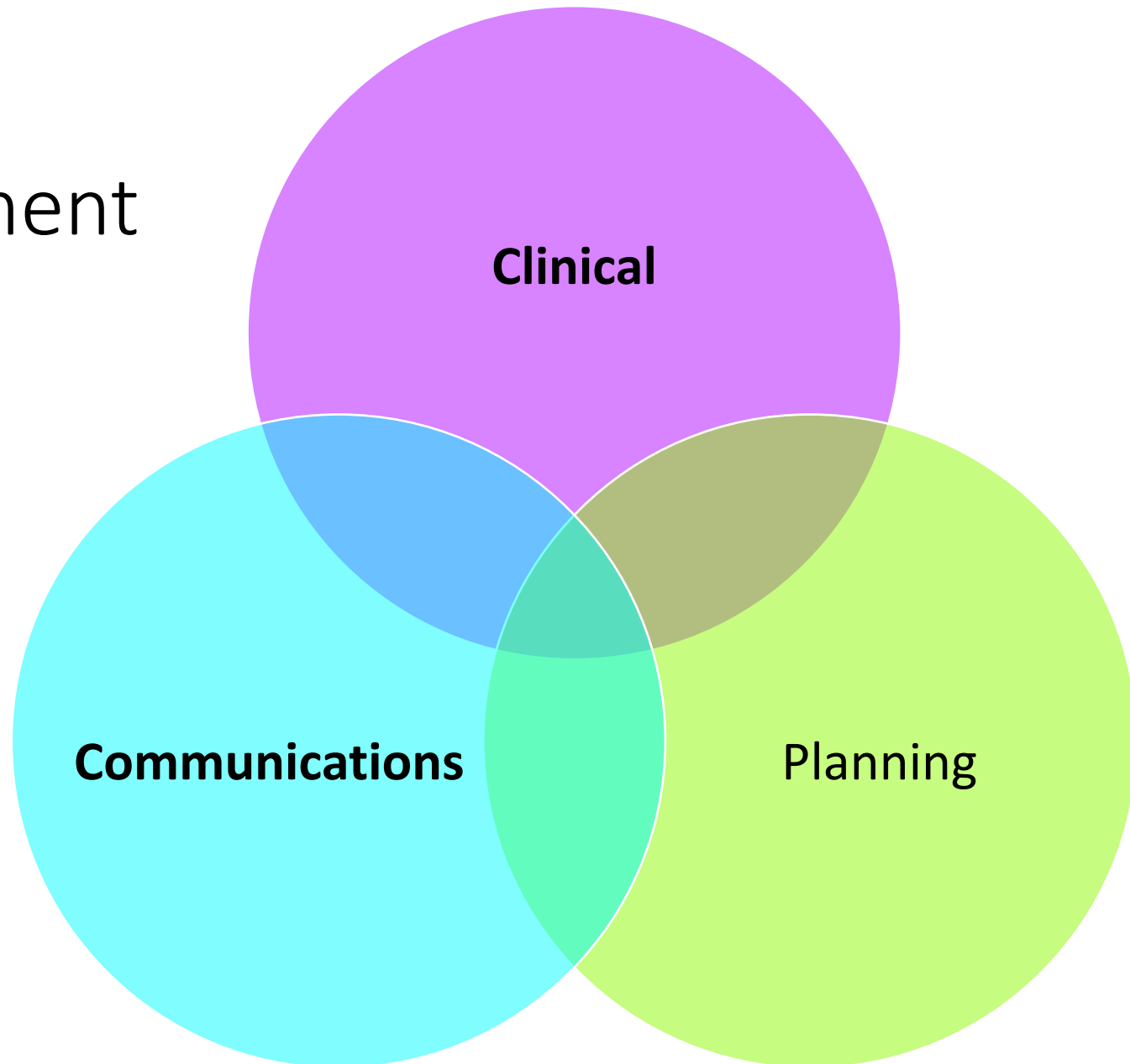


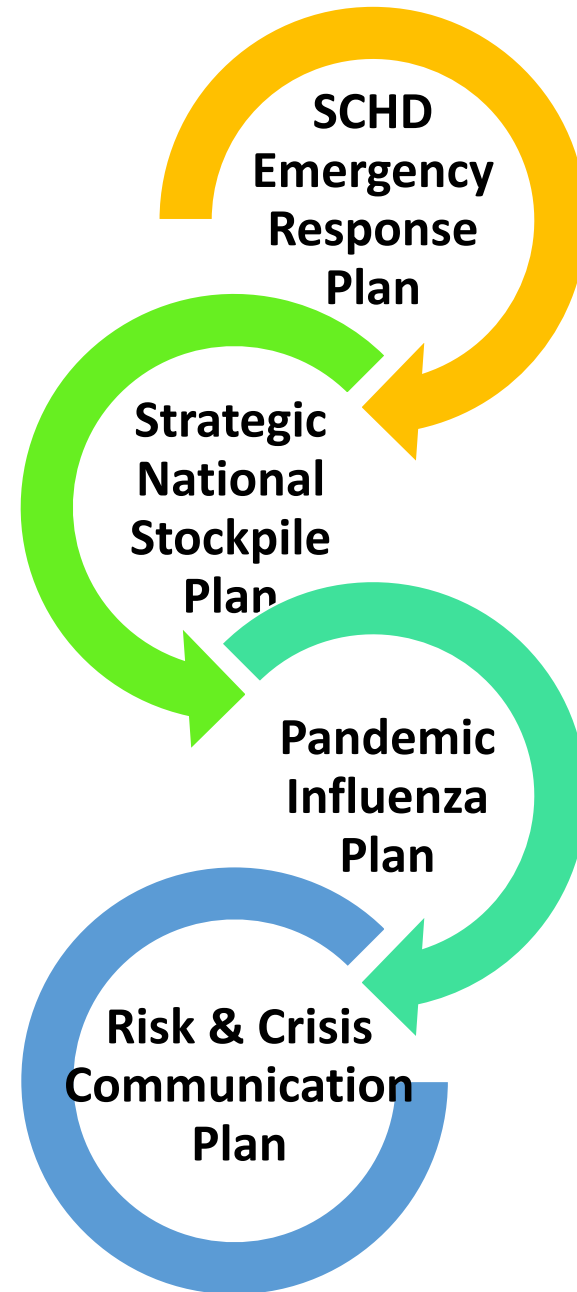
Summit County
Health Department

*COVID-19
Response
Strategy*



Planning

- Integrated plans linking operational, clinical & communication response to pandemic.
- Review & update existing SCHD preparedness plans.
- Key agency & stakeholder coordination.
- Training & Exercises
 - UDOH PanFlu TTX – 1/27/20 (COMPLETE)
 - RSS Supply Chain FSE – 3/25/20
 - SCHD PODS Training
- Coordination with regional, State and Federal agencies.



Local emergency response plan - NIMS/ICS compliance.

Required for access to federal resources, supplies and materiel.

Pandemic-specific plan integrating WHO, CDC, HHS, UDOH & SST.

SCHD communications plan linking internal & external messaging.

Clinical

- Assess & understand community risk.
- COVID-19 health information.
- Epidemiology & case reporting.
- Coordination & communication with local, State & Federal agencies.
- Mass Vaccination Facilities.



Community Health

Epidemiology

Agency Communication

Mass Vaccination

Communications

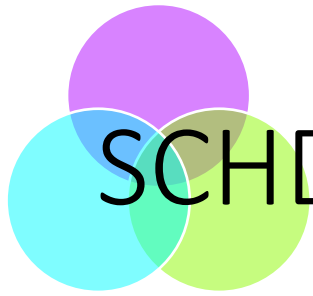
- Increase knowledge, manage expectations.
- Concise, accessible & accurate information.
- Timely updates.
- Actionable tools & collateral material.
- Reference materials for deeper understanding.

Community/Public

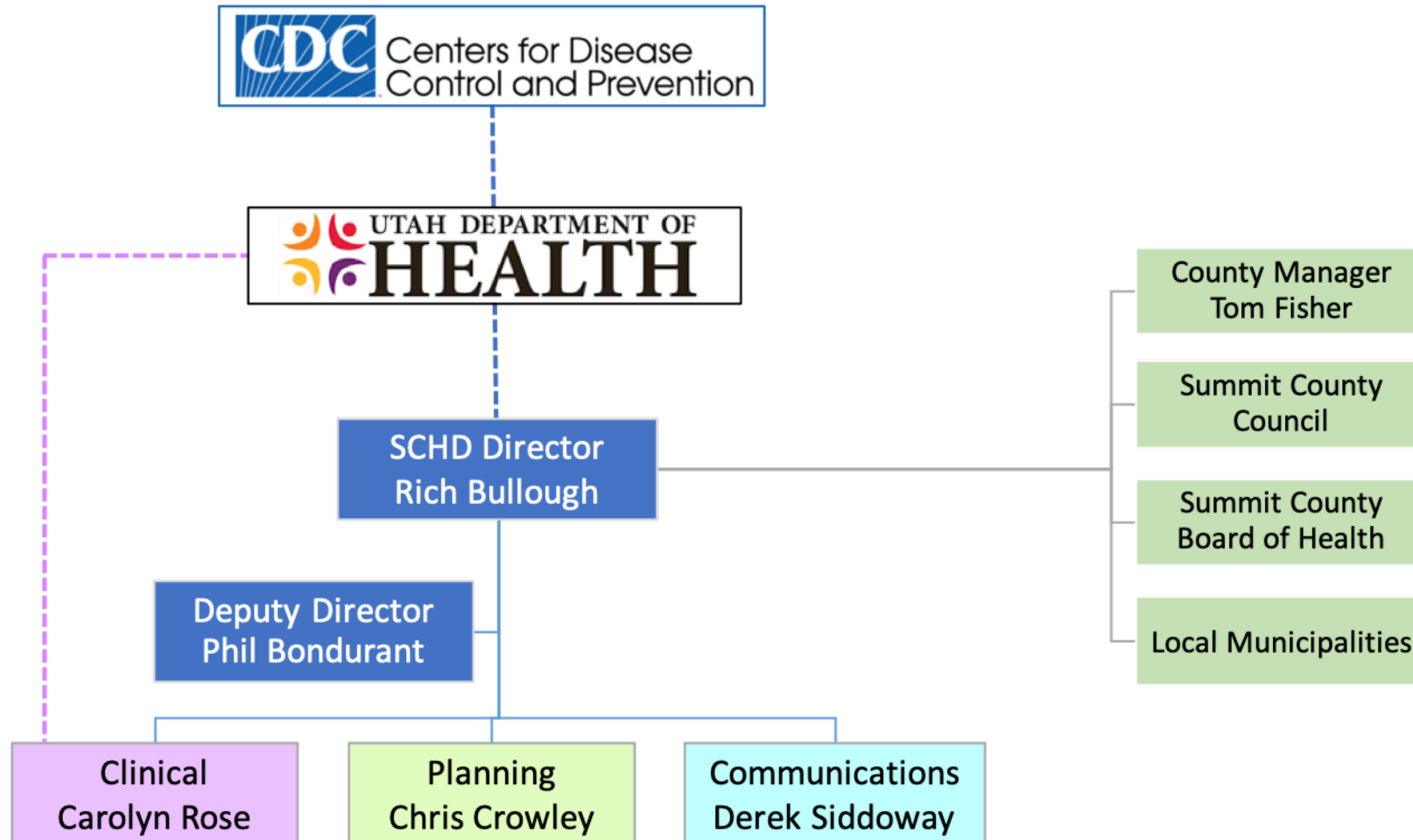
Schools/Recreation

Healthcare Partners

Business Community



SCHD: COVID-19 Information Flow Chart





Key Deliverables

- Build community trust.
- Increase community knowledge for informed decision making.
- Key stakeholder coordination.
- Healthcare partner & agency planning, integration, resource & capabilities review.
- Regional, State & Federal support plans.

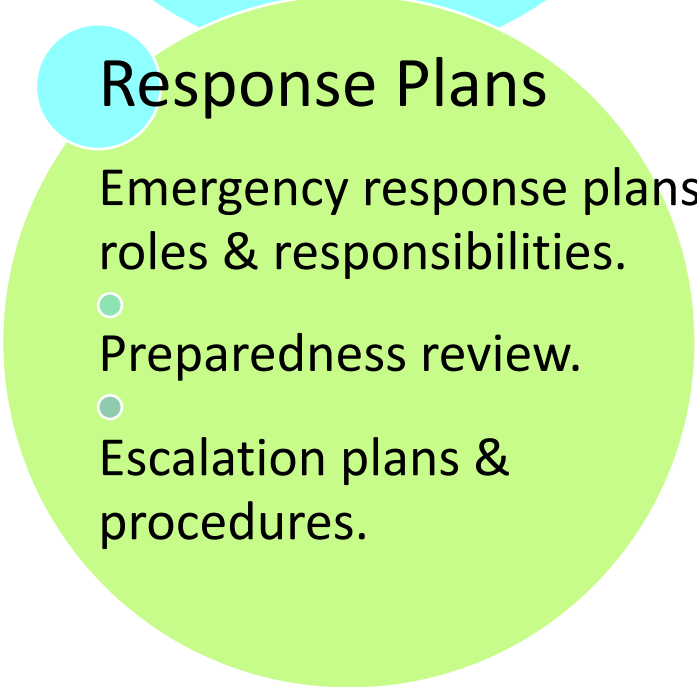


Community

Community outreach.

- Actionable tools & information.

- Stakeholder coordination.



Response Plans

Emergency response plans, roles & responsibilities.

- Preparedness review.

- Escalation plans & procedures.